

HEATSTRIP® 

OUTDOOR HEATING

never looked so good



WORLD CLASS PRODUCTS & QUALITY



HEATSTRIP®

HEATSTRIP, a division of Thermofilm Australia Pty Ltd, has been manufacturing innovative, stylish, and energy-efficient products for more than 30 years. The full range of HEATSTRIP products is available to residential and commercial markets both in Australia and around the world. Their award-winning outdoor heating solutions are used in some of Australia's most renowned venues and residential homes. HEATSTRIP products are designed to provide maximum comfort and energy efficiency in all types of outdoor settings.

In 2014 Thermofilm was inducted into the Victorian Manufacturing Hall of Fame.

In 2017 HEATSTRIP Portable LPG heater TGH34PL won a Good Design Award in Consumer Products.



2014 VICTORIAN
MANUFACTURING
HALL OF FAME



2013 MELBOURNE
DESIGN AWARDS



2013 HEATSTRIP CLASSIC

Thermofilm Australia Pty Ltd

PRODUCT SELECTOR

CLASSIC - PAGE 4

- Pergola / Protected alfresco
- Difficult to heat indoor areas
- Cafe, garage/shed

Ideal Mounting Height 2.1-2.5m
Max Mounting Height 2.7m



CLASSIC WITH REMOTE - PAGE 5

- Pergola / protected alfresco
- Difficult to heat indoor areas
- Cafe, garage, shed

Ideal Mounting Height 2.1-2.5m
Max Mounting Height 2.7m



CLASSIC WITH REMOTE & APP - PAGE 5

- Pergola / protected alfresco
- Difficult to heat indoor areas
- Cafe, garage, shed

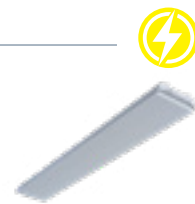
Ideal Mounting Height 2.1-2.5m
Max Mounting Height 2.7m



ELEGANCE - PAGE 6

- Protected alfresco
- Difficult to heat indoor areas

Ideal Mounting Height 2.1-2.5m
Max Mounting Height 2.7m



ELEGANCE WITH REMOTE & APP - PAGE 7

- Protected alfresco
- Difficult to heat indoor areas

Ideal Mounting Height 2.1-2.5m
Max Mounting Height 2.7m



MAX - PAGE 8

- High ceilings
- Exposed alfresco
- Balconies

Ideal Mounting Height 2.2-2.8m
Max Mounting Height 3m



MAX DC COMMERCIAL - PAGE 9

- High ceilings
- Exposed alfresco
- Balconies

Ideal Mounting Height 2.2-2.8m
Max Mounting Height 3m



MAX DC WITH REMOTE - PAGE 10

- High ceilings
- Exposed alfresco
- Balconies

Ideal Mounting Height 2.2-2.8m
Max Mounting Height 3m



NANO - PAGE 11

- Portable spot heating
- Dining / entertaining / work stations
- Suitable for indoor and outdoor areas

Indoor Heating Area 14m²
Outdoor Heating Area 5-9m²



INTENSE ALL BLACK - PAGE 12

- Under cover protected areas
- Semi-exposed outdoor locations

Ideal Mounting Height 2.1-2.5m
Max Mounting Height 2.8m



INTENSE OFF-WHITE - PAGE 13

- Under cover protected areas
- Semi-exposed outdoor locations

Ideal Mounting Height 2.1-2.5m
Max Mounting Height 2.8m



INTENSE WITH REMOTE & APP - PAGE 14

- Under cover protected areas
- Semi-exposed outdoor locations

Ideal Mounting Height 2.1-2.5m
Max Mounting Height 2.8m



ENHANCE WITH REMOTE & APP - PAGE 115

- Indoor / Outdoor
- Direct spot heating applications

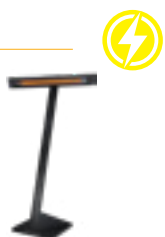
Ideal Mounting Height 2.1-2.5m
Max Mounting Height 2.7m



INTENSE PORTABLE - PAGE 16

- Portable spot heating
- Dining / entertaining / work stations
- Suitable for indoor and outdoor areas

Indoor Heating Area 14m²
Outdoor Heating Area 5-9m²



WALL MOUNTED NATURAL GAS - PAGE 17

Alfresco areas / hospitality / outdoor dining / kitchen / patios / balconies

Ideal Mounting Height 2-2.7m
Max Mounting Height 3.5m
Heating Area 16m²



PORTABLE LPG - PAGE 17

- Portable spot heating
- Outdoor dining / kitchen
- Hospitality
- Patios / courtyards / balconies

Heating Area 16m²



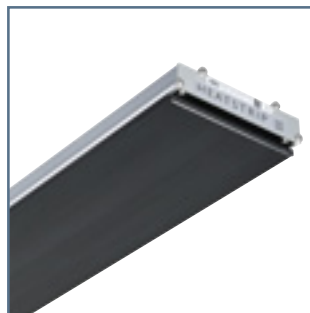
HEATSTRIP[®] CLASSIC

SLIMLINE ELECTRIC

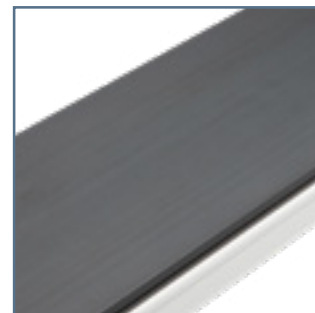


Classic slimline electric, heating solution for your balcony, patio, undercover, protected alfresco area, or verandah. Also suitable for indoor use.

- Indoor/outdoor electric radiant heater.
- 3 models available THH1800A (1800W), THH2400A (2400W) & THH3200A (3200W).
- Convenient DIY installation for the 1800W and 2400W models. 3200W model must be hard-wired by a licensed electrician.
- Standard mounting bracket included can be used for wall or ceiling mounting. Bracket can also be used to suspend the heater using chains or wires.
- Ideal mounting height 2.1-2.5m. Max mounting height 2.7m.



Corrosion protected for even the toughest environments.



Stylish, sleek, unobtrusive design with unique HEATSTRIP front profile and coating technology.

Optional Controllers

HARDWIRED (TT-MTM)
Wall mounted controller and remote control.



DIY (TT-MTR-PLUG)
Timer switch remote control of plug-in heaters. Max 10amps.



Model	Running Costs**	Power	Current	Dimensions	Weight	Lead Length	Plug	Heating Area	Standard Bracket	Flush Mount Kit	Extension Poles
THH1800A	45c / hr	1800 Watts	7.5 amps	1104x165x48mm	6 kg	1000 mm	Yes	3-4 m ²	ZBRAC-113S	THHAC-010	THHAC-005 (300mm)
THH2400A	60c / hr	2400 Watts	10 amps	1364x165x48mm	7 kg	1000 mm	Yes	4-5 m ²	ZBRAC-113S	THHAC-011	THHAC-006 (600mm)
THH3200A*	80c / hr	3200 Watts	13.3 amps	1774x165x48mm	9 kg	1000 mm	No	5-6 m ²	ZBRAC-113S	THHAC-012	THHAC-007 (900mm) THHAC-008 (1200mm)

Materials of construction: High temperature ceramic coated extruded alloy. IP55 Rated.
** Running cost based off \$0.25/kWh energy tariff.

***This unit must be installed by a licensed electrician.**



HEATSTRIP[®] CLASSIC WITH REMOTE & CLASSIC WITH REMOTE & APP

Classic slimline electric, all-black heating solution for your undercover, protected alfresco area, balcony, patio or verandah. Also suitable for indoor use.

- 4 models available :
Remote (THH2400AR / THH3200AR)
Remote and App (THH2400AA / THH3200AA)
- Convenient DIY Installation for the 2400W model. 3200W model must be hard-wired by a licensed electrician.
- Standard mounting bracket can be used for wall or ceiling mounting.
- Bracket can also be used to suspend the heater using chains or wires.
- Ideal mounting height 2.1-2.5m. Max mounting height 2.7m.



Classic with remote

LED control panel, remote control with easy on/off functionality 3 heat levels adjustable 24 Hour timer



Classic with remote & app

Remote, app plus smart home connectivity. Compatible with Google and Amazon smart home platforms. Bluetooth & WIFI.



Model	Running Costs**	Power	Current	Dimensions	Weight	Lead Length	Plug	Heating Area	Standard Bracket	Flush Mount Kit	Extension Poles
THH2400AR	60c / hr	2400 Watts	10 amps	1371x165x48mm	7 kg	1000 mm	Yes	4-5 m ²	ZBRAC-113B	THHAC-013	THYAC-047 (300mm)
THH3200AR*		3200 Watts	13.5 amps	1780x165x48mm	9 kg		No	5-6 m ²		THHAC-014	THYAC-048 (600mm)
THH2400AA	80c / hr	2400 Watts	10 amps	1371x165x48mm	7 kg	1000 mm	Yes	4-5 m ²	ZBRAC-113B	THHAC-013	THYAC-049 (900mm)
THH3200AA*		3200 Watts	13.5 amps	1780x165x48mm	9 kg		No	5-6 m ²		THHAC-014	THYAC-050 (1200mm)

Materials of construction: High temperature all-black ceramic coated extruded alloy. IP55 rated.

** Running cost based off \$0.25/kWh energy tariff.

***This unit must be installed by a licensed electrician..**

HEATSTRIP® ELEGANCE



Slimline, off-white electric radiant heater for your balcony, patio, undercover, protected alfresco area, or verandah. Also suitable for indoor use.

- Indoor / protected outdoor electric radiant heater.
- 3 models available, THE1800 (1800W) & THE2400 (2400W) are Plug-in DIY, the THE3600 (3600W) must be hard-wired by a licensed electrician.
- Included bracket can be used for wall & ceiling mounting, can also be suspended using chains or wires.
- Remote control optional accessory.
- Ideal mounting height 2.1-2.5m. Max mounting height 2.7m.



Corrosion resistant
"offwhite" slimline heater.



Suitable for both direct
mounting & suspending.

Optional Controllers

HARDWIRED (TT-MTM)
Wall mounted
controller and
remote control.



DIY (TT-MTR-PLUG)
Timer switch remote
control of plug-in
heaters. Max 10amps.



Model	Running Costs**	Power	Current	Dimensions	Weight	Lead Length	Plug	Heating Area	Standard Bracket	Flush Mount Kit	Extension Poles
THE1800	45c / hr	1800 Watts	7.5 amps	974x170x48.5	4 kg	1000 mm	Yes	3-4 m ²	ZBRAK-113W	THEAC-040	THEAC-043 (300mm)
THE2400	60c / hr	2400 Watts	10 amps	1204x170x48.5	7 kg	1000 mm	Yes	4-5 m ²		THEAC-041	THEAC-044 (600mm)
THE3600*	90c / hr	3600 Watts	15 amps	1804x170x48.5	9 kg	1000 mm	No	5-6 m ²		THEAC-042	THEAC-045 (900mm) THEAC-046 (1200mm)

Materials of construction: High temperature ceramic coated extruded alloy. IP55 rated.

** Running cost based off \$0.25/kWh energy tariff.

*This unit must be installed by a licensed electrician.



App and remote controlled sleek, off-white electric heating solution for your undercover, protected alfresco area, balcony, patio or verandah. Also suitable for indoor use.

- Indoor/outdoor electric radiant heater.
- 2 models available: THE2400RA (2400W) & THE3200RA (3200W).
- Remote, app plus smart home connectivity. Compatible with Google and Amazon smart home platforms. Bluetooth & WIFI.
- Convenient DIY installation for the 2400W model. 3200W model must be hard-wired by a licensed electrician.
- Standard mounting bracket included can be used for wall or ceiling mounted. Bracket can also be used to suspend the heater using chains or wires.
- Ideal mounting height 2.1-2.5m. Max mounting height 2.7m.



Control Panel with On/Off functionality, High/Low temperature settings, 1/2/4 hour timer.



Remote or app for convenient control.

HEATSTRIP[®] ELEGANCE

WITH REMOTE & APP



WITH REMOTE,
APP CONTROL
& SMART HOME
CONNECTIVITY
BLUETOOTH
& WIFI



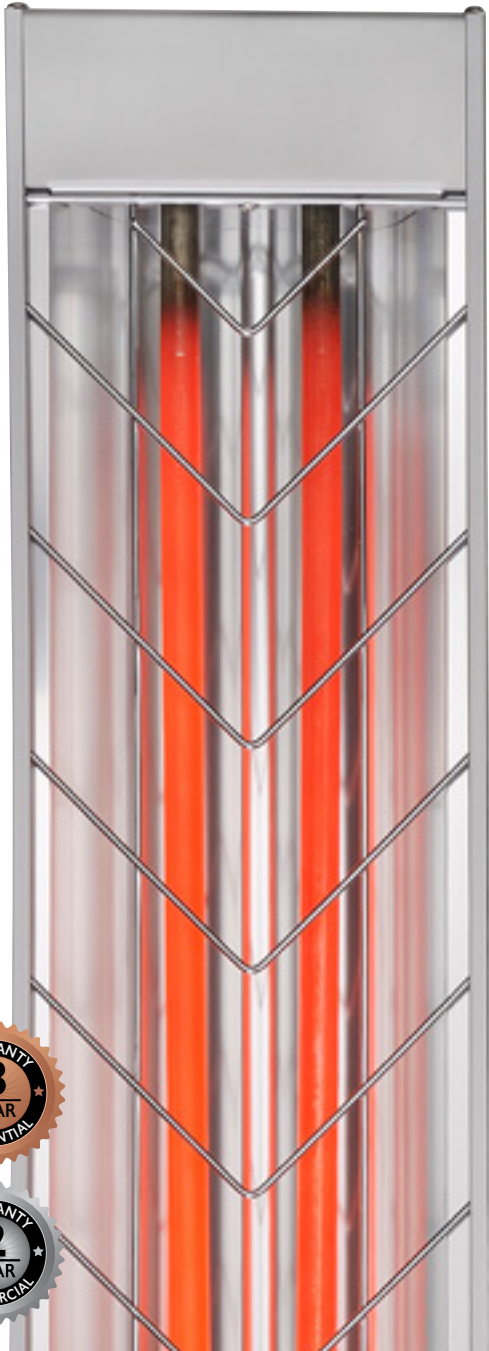
Model	Running Costs**	Power	Current	Dimensions	Weight	Lead Length	Plug	Heating Area	Standard Bracket	Flush Mount Kit	Extension Poles
THE2400RA	60c / hr	2400 Watts	10 amps	1306x170x42.7mm	7 kg	1000 mm	Yes	4-5 m ²	ZBRAK-113W	THERAC-056	THEAC-043 (300mm) THEAC-044 (600mm)
THE3200RA*	80c / hr	3200 Watts	13.3 amps	1710x170x42.7mm	9 kg	1000 mm	No	5-6 m ²	ZBRAK-113W	THERAC-057	THEAC-045 (900mm) THEAC-046 (1200mm)

Materials of construction: High temperature off-white ceramic coated extruded alloy. IP55 rated.
** Running cost based off \$0.25/kWh energy tariff.

*This unit must be installed by a licensed electrician.

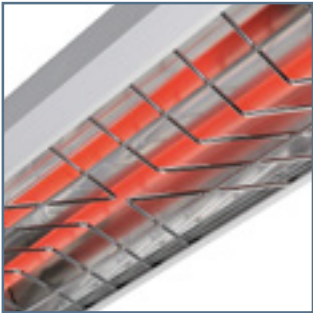
HEATSTRIP[®]

MAX



Commercial grade heating solution for tough outdoor and indoor heating applications. Perfect for outdoor alfresco areas, balconies, courtyards, hospitality, and warehouses.

- Electric infrared heater.
- 2 models available THX2400 (2400W) & THX3600 (3600W).
- The Max heater is a high-temperature radiant heater with a shatterproof heating element.
- Convenient DIY installation for the 2400W model. 3600W model must be hard-wired by a licensed electrician.
- Commercial grade quality and construction.
- Ideal mounting height 2.2-2.8m. Max mounting height 3m.



Unique “low glow” incoloy element - no more blinding light.



Optional accessories available to purchase such as extension poles and flush mount enclosures.

Optional Controllers

HARDWIRED (TT-MTM)
Wall mounted controller and remote control.



DIY (TT-MTR-PLUG)
Timer switch remote control of plug-in heaters. Max 10amps.



Model	Running Costs**	Power	Current	Dimensions	Weight	Lead Length	Plug	Heating Area	Mounting Bracket	Flush Mount Kit	Extension Poles
THX2400	60c / hr	2400 Watts	10 amps	854x170x80mm	6 kg	1000 mm	Yes	10 m ²	ZBRAK-132S	THXAC-030	THHAC-005 (300mm) THHAC-006 (600mm)
THX3600*	90c / hr	3600 Watts	15 amps	1184x170x80mm	8 kg	1000 mm	No*	15 m ²	ZBRAK-132S	THXAC-031	THHAC-007 (900mm) THHAC-008 (1200mm)

Materials of construction: Anodised alloy casing and end caps, with a stainless steel grille. IPX5 rated.

** Running cost based off \$0.25/kWh energy tariff.

***This unit must be installed by a licensed electrician.**



Introducing the New MAX DC, designed to deliver high radiant infrared heat, making it ideal for exposed outdoor areas. Its dual element design ensures a compact unit with maximum efficiency. Perfect for commercial settings such as hospitality venues, restaurants, and warehouses, the MAX DC provides instant warmth.

- Commercial Electric Infrared Heater.
- 2 models available THX4000DC (4000W) & THX6000DC (6000W).
- Dual heat infrared carbon element technology and upgraded heat reflector design that delivers world class performance.
- High radiant infra-red temperature which is perfect for exposed outdoor sites.
- Must be hard-wired by a licensed electrician.
- Ideal mounting height 2.2-2.8m. Max mounting height 3m.



Commercial quality and construction.



Suitable for both direct mounting & suspending.



Model	Running Costs**	Power	Current	Dimensions	Weight	Lead Length	Plug	Heating Area	Mounting Bracket	Extension Poles
THX4000DC	\$1.12 / hr	4000 Watts	16.6 amps	1134x170 x80mm	5.1 kg	1500 mm	No*	12 m ²	ZBRAK-132B	THYAC-047 (300mm) THYAC-048 (600mm) THYAC-049 (900mm) THYAC-050 (1200mm)
THX6000DC	\$1.68 / hr	6000 Watts	25 amps	1274x170x80mm	5.7 kg	1500 mm	No*	16 m ²	ZBRAK-132B	

Materials of Construction: Aluminium Alloy, IPX5 Rated.

** Running cost based off \$0.28/kWh energy tariff.

*This unit must be installed by a licensed electrician

HEATSTRIP[®] MAX DC

WITH REMOTE

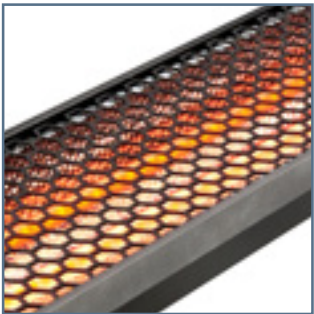


Max heat, max style with this heating solution for exposed and hard to heat areas such as balconies, pergolas, warehouses and restaurants.

- Electric infrared heater.
- 2 models available. THX2400DCR (2400W) & THX3600DCR (3600W).
- Dual heat infrared carbon element technology and upgraded heat reflector design that delivers world class performance.
- The remote and control panel provides 3 heat levels with adjustable timer options from 0-24 hours with the touch of a button.
- Convenient DIY installation for the 2200W model. 3600W model must be hard-wired by a licensed electrician.
- Ideal mounting height 2.2-2.8m. Max mounting height 3m.



Anodised alloy components provide corrosion protection, also suitable for coastal locations.



Commercial quality and construction. With a stylish hexagonal grille and black finish.

Model	Running Costs**	Power	Current	Dimensions	Weight	Lead Length	Plug	Heating Area	Mounting Bracket	Flush Mount Kit	Extension Poles
THX2400DCR	60c / hr	2400 Watts	10 amps	979x170 x80mm	6 kg	1000 mm	Yes	7-12 m ²	ZBRAK-132B	THXAC-034	THYAC-047 (300mm) THYAC-048 (600mm) THYAC-049 (900mm) THYAC-050 (1200mm)
THX3600DCR	90c / hr	3600 Watts	15 amps	1190x170x80mm	8 kg	1000 mm	No*	11-18 m ²	ZBRAK-132B	THXAC-035	

Materials of Construction: Anodised alloy casing and end caps, with a powder coated grill (Black) IPX5.
** Running cost based off \$0.25/kWh energy tariff.

*This unit must be installed by a licensed electrician



HEATSTRIP[®] NANO

Mounted or portable spot heating, suitable for protected undercover alfresco areas, bathrooms or offices. Suitable for indoor & outdoor areas.

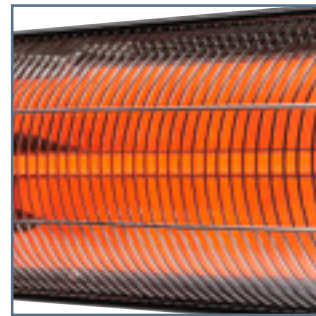
- Infrared Electric Heater.
- Nano THN2000 (2000W) / Portable Nano is THN2000P.
- High instant heat output.
- Spot heating.
- Heat & timer control.
- Great for bathrooms, garages, sheds, enclosed alfresco areas.
- Easy DIY installation with wall/ceiling mount brackets included.



Stainless steel portable stand suitable for easy installation. Purchased separately. 450 x 2050mm.



Remote provides heat output (1-4) & timer (0-24 hour) control.



High-performance carbon filament electric infra-red element, providing instant heat.



Entry-level heater. Quality, robust construction. Easy DIY installation with wall/ceiling mount brackets included.

Model	Running Costs**	Power	Current	Dimensions	Weight	Lead Length	Plug	Heating Area	Optional Portable Stand
THN2000	50c / hr	2000 Watts	8.3 amps	900x130x89.5mm	3 kg	2000 mm	Yes	5-9 m ²	THN-STAND

Materials of construction: Extruded alloy casing, 304 stainless steel grille and mounting brackets. IP55 protection rating.
 ** Running cost based off \$0.25/kWh energy tariff.

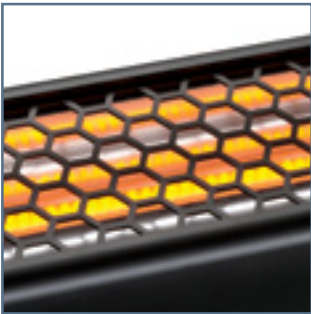
HEATSTRIP[®] INTENSE

INFRARED HEAT

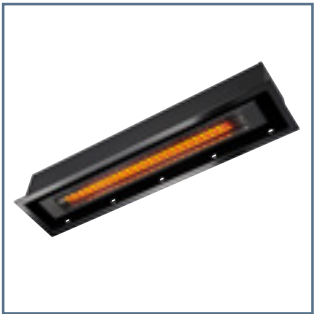


High output, instant heat. Ideal for undercover and semi exposed outdoor areas or indoor use.

- Electric infrared instant high temperature heater.
- 2 models available: THY2200 (2200W) and THY3200 (3200W).
- Convenient DIY installation for the 2200W model. 3200W model must be hard-wired by a licensed electrician.
- All black construction, corrosion protection for most environments.
- Standard mounting bracket included can be used for wall or ceiling mounted. Bracket can also be used to suspend the heater using chains or wires.
- Ideal mounting height 2.1-2.5m. Max mounting height 2.8m.



High performance infra-red electric heater. That provides instantaneous heat.



Optional accessories available (see below for part number).

Optional Controllers

HARDWIRED (TT-MTM)
Wall mounted controller and remote control.



DIY (TT-MTR-PLUG)
Timer switch remote control of plug-in heaters. Max 10amps.



Model	Running Costs**	Power	Current	Dimensions	Weight	Lead Length	Plug	Heating Area	Standard Bracket	Flush Mount Kit	Extension Poles
THY2200	55c / hr	2200 Watts	9.2 amps	1068x120x90mm	6 kg	1000 mm	Yes	5-9 m ²	ZBRAC-132B	THYAC-051	THYAC-047 (300mm) THYAC-048 (600mm) THYAC-049 (900mm) THYAC-050 (1200mm)
THY3200*	80c / hr	3200 Watts	13.3 amps	1270x120x90mm	7 kg	1000 mm	No	8-13 m ²	ZBRAC-132B	THYAC-052	

Materials of construction: High temperature Black ceramic coated extruded alloy. IPX5 rated.
** Running cost based off \$0.25/kWh energy tariff.

***This unit must be installed by a licensed electrician.**



HEATSTRIP[®] INTENSE

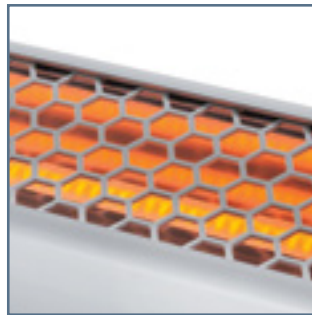
OFF WHITE

High output, instant heat. Ideal for undercover and semi exposed outdoor areas or indoor use.

- Electric infrared instant high temperature heater.
- 2 models available: THY2200W (2200W) and THY3200W (3200W).
- Convenient DIY installation for the 2200W model. 3200W model must be hard-wired by a licensed electrician.
- All off-white construction with hexagonal grill is corrosion protected for most environments.
- Standard mounting bracket included for wall or ceiling mounting. Bracket can be used to suspend the heater using chains or wires.
- Ideal mounting height 2.1-2.5m. Max mounting height 2.8m.



Corrosion resistant
"off-white" slimline heater.



Carbon filament electric infra-red
element, providing instant heat.

Optional Controllers

HARDWIRED (TT-MTM)
Wall mounted
controller and
remote control.



DIY (TT-MTR-PLUG)
Timer switch remote
control of plug-in
heaters. Max 10amps.



Model	Running Costs**	Power	Current	Dimensions	Weight	Lead Length	Plug	Heating Area	Standard Bracket	Flush Mount Kit	Extension Poles
THY2200W	55c / hr	2200 Watts	9.2 amps	1068x120x90mm	6 kg	1000 mm	Yes	5-9 m ²	ZBRAK-132W	THYAC-053	THEAC-043 (300mm) THEAC-044 (600mm)
THY3200W*	80c / hr	3200 Watts	13.3 amps	1270x120x90mm	7 kg	1000 mm	No	8-13 m ²	ZBRAK-132W	THYAC-054	THEAC-045 (900mm) THEAC-046 (1200mm)

Materials of construction: High temperature off-white ceramic coated extruded alloy. IPX5 rated.
** Running cost based off \$0.25/kWh energy tariff.

***This unit must be installed by a licensed electrician.**

HEATSTRIP[®] INTENSE

WITH REMOTE & APP



This sleek, all-black electric heating system provides a modern and attractive outdoor heating solution with high output and instant heat. Perfect for undercover and semi-exposed outdoor areas or indoor use, you can control it with an app or remote for added convenience.

- Indoor/outdoor electric radiant heater.
- 2 models available THB2200BA (2200W) & THB3200BA (3200W).
- Remote, APP plus smart home connectivity. Compatible with Google and Amazon smart home platforms. Bluetooth & WIFI.
- Convenient DIY Installation for the 2200W model. 3200W model must be hard-wired by a licensed electrician.
- Standard mounting bracket can be used for wall or ceiling mounting. Bracket can also be used to suspend the heater using chains or wires.
- Ideal mounting height 2.1-2.5m. Max mounting height 2.8m.
- Optional Accessories available. (See page 16 for more information).



WITH REMOTE,
APP CONTROL
& SMART HOME
CONNECTIVITY
BLUETOOTH
& WIFI



High performance
infra-red electric heater.
That provides instant heat.



App and remote control provides
3 heat levels with adjustable timer
options from 0-24 hours with the
touch of a button.

Model	Running Costs**	Power	Current	Dimensions	Weight	Lead Length	Plug	Heating Area	Standard Bracket	Flush Mount Kit	Extension Poles
THB2200BA	55c / hr	2200 Watts	9.2 amps	900x122x90mm	6 kg	1000 mm	Yes	5-9 m ²	ZBRAK-132B	THBAC-001	THYAC-047 (300mm) THYAC-048 (600mm)
THB3200BA*	80c / hr	3200 Watts	13.3 amps	1040x122x90mm	7 kg	1000 mm	No	8-13 m ²	ZBRAK-132B	THBAC-002	THYAC-049 (900mm) THYAC-050 (1200mm)

Materials of Construction: Black anodized alloy casing and end caps. Powder coated grille. IPX5 Rated
** Running cost based off \$0.25/kWh energy tariff.

***This unit must be installed by a licensed electrician**



This sleek, slimline heater with a smooth German Schott glass front is the perfect all-black electric heating solution for instant performance. Easily control the heater with the included remote and app, with a timer ranging from 0-24 hours & 3 different heating levels. Whether you need localized or direct spot heating indoors or outdoors, this heater is sure to meet your needs.

- Indoor/outdoor electric radiant heater.
- 2 models available THG2400BA (2400W) & THG3200BA (3200W).
- Remote, app plus smart home connectivity. Compatible with Google and Amazon smart home platforms. Bluetooth & WIFI.
- Convenient DIY Installation for the 2400W model. 3200W model must be hard-wired and installed by a licensed electrician.
- Ideal mounting height 2.1-2.5m. Max mounting height 2.7m.



App and remote control provides 3 heat levels with adjustable timer options from 0-24 hours with the touch of a button.



Suitable for wall & ceiling mounting or suspension via chains or wires.

HEATSTRIP[®] ENHANCE

WITH REMOTE & APP



Model	Running Costs**	Power	Current	Dimensions	Weight	Lead Length	Plug	Heating Area	Standard Bracket	Flush Mount Kit
THG2400BA	60c / hr	2400 Watts	10 amps	920x187x76mm	6 kg	1000 mm	Yes	6-8 m ²	ZBRAK-154	THGAC-001
THG3200BA*	80c / hr	3200 Watts	13.3 amps	1020x187x76mm	8 kg	1000 mm	No	8-12 m ²	ZBRAK-154	THGAC-002

Materials of Construction: High temperature off-white ceramic coated extruded alloy. IP55 Rated.
** Running cost based off \$0.25/kwH energy tariff.

***This unit must be installed by a licensed electrician**

HEATSTRIP[®] INTENSE

ELECTRIC PORTABLE



Optional Controller

DIY (TT-MTR-PLUG)
Optional controller is available for easy DIY functions with LED indicators, 1/2/4 hour timer & remote control On/Off.

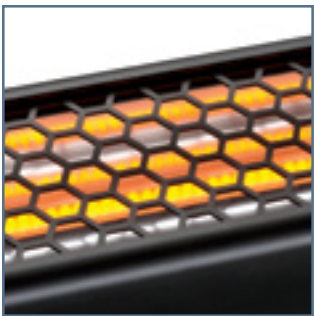


An attractive portable outdoor heating solution, providing high output, instant heat. Suitable for spot heating tables, lounges, entertaining areas and work stations.

- Electric Infrared Portable Heater.
- THY2200P (2200W).
- With high quality, robust, all black construction, components are sub-assembled for easy final DIY installation.
- In-built wheels for easy portability and storage.
- 3-year residential and 2-year commercial warranty.



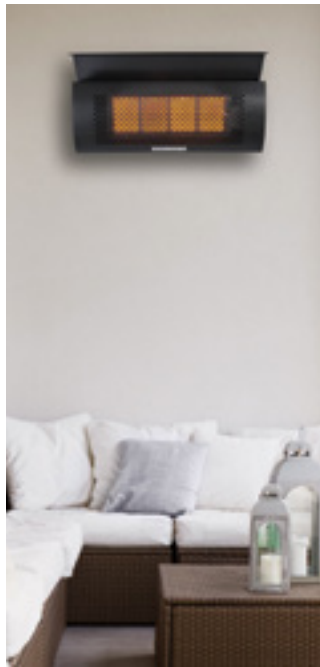
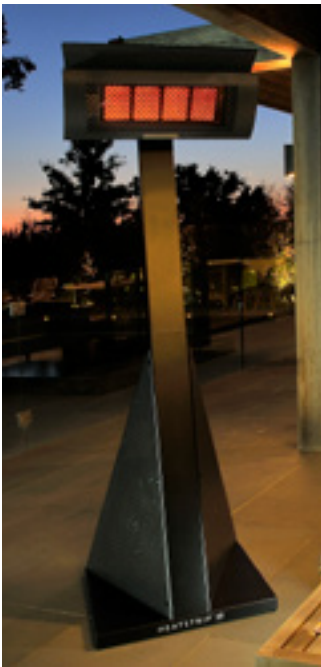
Ideal for indoor and outdoor use. In-built wheels for easy portability and storage.



Includes a high-performance carbon filament electric infra-red element, providing instant heat.

Model	Running Costs**	Power	Current	Dimensions	Weight	Lead Length	Plug	Heating Area	Optional Controller
THY2200P	55c / hr	2200 Watts	9.2 amps	1068x2050x500mm	20 kg	3000 mm	Yes	5-9 m ²	TT-MTR-PLUG

Materials of construction: Black anodized alloy casing and end caps. Powder coated grille. IPX5 rated.
** Running cost based off \$0.25/kWh energy tariff.



HEATSTRIP®

WALL MOUNTED
&
PORTABLE LPG

WALL MOUNTED



PORTABLE LPG



The new and upgraded HEATSTRIP® wall mounted gas heaters and Portable LPG gas heater are a stylish addition to any outdoor area. Ideal for undercover and semi exposed outdoor areas.

- Portable LPG heater: TGH34PL-2 (34MJ, 4 tile).
- Gas wall mounted heater: TGH34WN-2 (Natural Gas model, 34MJ)
- Wind protection rating of 16km/hr.
- Suitable for alfresco, patios, outdoor dining areas, outdoor kitchens, courtyards, verandas and hospitality.
- Fully concealed gas pipes and bottle.
- In-built wheels for easy portability and storage.
- Optional heater cover also available for your heater.
- Wall mounting bracket allows for multiple mounting angles



Electronic, battery-operated finger pull on/off controls, makes operation so easy and effortless.



The standard heat reflector ensures only 500mm overhead clearance is required. The optional HeatShield (TGHAC-003) reduces this to 300mm clearance.

Model	Running Costs**	Tiles	MJ	Dimensions	Weight	Ignition	Heating Area	Heat Shield	Cover or Extension Pole	Gas Type
TGH34WN-2 (Wall mounted)	\$68c / hr	4	34	650x190x380mm	11.5 kg	Electronic finger pull	11.5 m ²	TGHAC-003	TGHAC-004	Natural Gas
TGH34PL-2 (Portable LPG)	\$2.00 / hr	4	34	650x670x2118mm	31.5 kg	Electronic finger pull	16 m ²	TGHAC-003	TGHCOVER	LPG

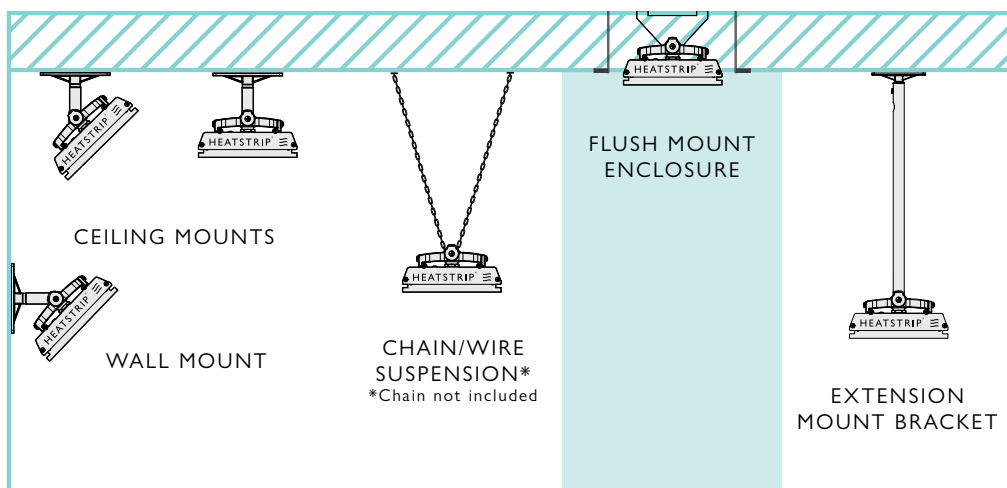
Materials of Construction: Head- Stainless steel (430ss) with high temperature paint coating. Stand: E-coated mild steel with powder coated finish. ** Running cost based off \$2.78pH.

ACCESSORIES

We have a wide range of mounting accessories and controllers are available. Let your HEATSTRIP outdoor heater be a feature, or let it blend with in with your choice of décor.

Mounting accessories for **Classic & Elegance Models**

Standard mounting bracket can be used for wall, ceiling mounting. Bracket can also be used to suspend the heater using chains or wires.



Available in silver, white, black (Matching coloured brackets are included with the heater).



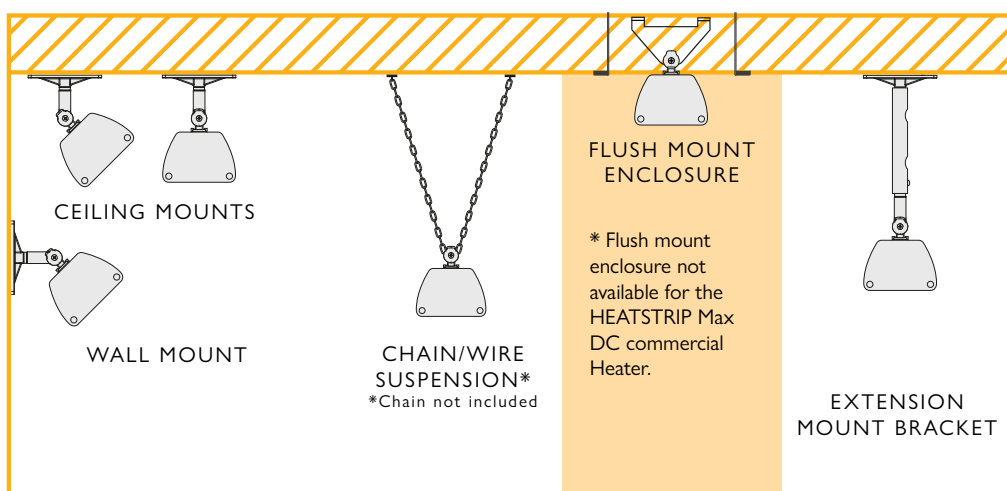
Flush Mount Kits are available for each model. Available in silver, white or black trim.



Extension poles available in 4 sizes (300/600/900/1200mm) in silver, white or black.

Mounting accessories for **Intense & Max Models***

Standard mounting bracket can be used for wall, ceiling mounting. Bracket can also be used to suspend the heater using chains or wires.



Available in black or white (Matching coloured brackets are included with the heater).



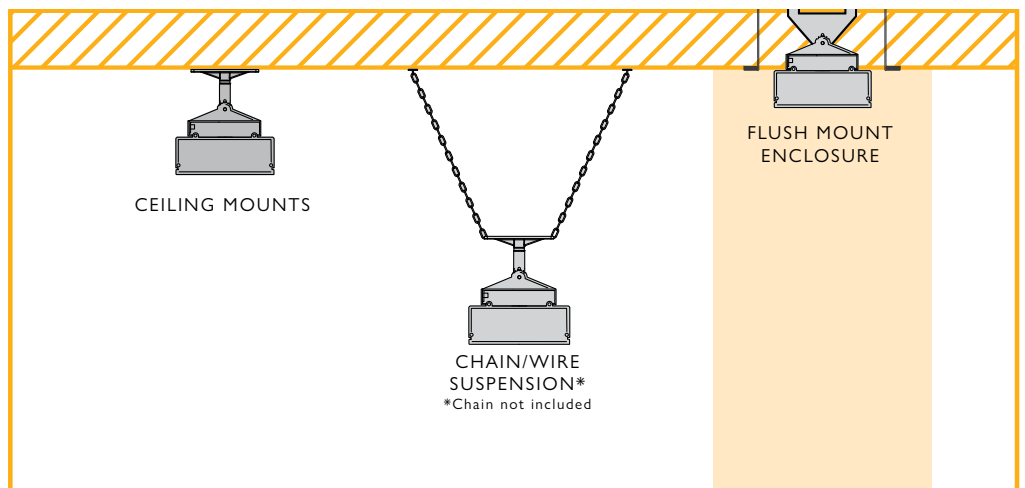
Flush Mount Kits are available for each model. Available in black or white trim.



Extension poles available in 4 sizes (300/600/900/1200mm) in silver, white or black.

Mounting accessories for Enhance Models

Standard mounting bracket can be used for wall, ceiling mounting. Bracket can also be used to suspend the heater using chains or wires.



Flush Mount Kits are available for each model. Available in black trim.



Standing mounting bracket can be used for wall, ceiling mounting or can be used to suspend the heater using chains or wires.

Accessories for Wall Mounted Gas Models



Ceiling mount extension pole. Allows heater to be suspended from the ceiling.



The HeatShield allows for low clearance installations, 300mm from the ceiling.

Optional Controllers for Classic, Elegance, Intense, Intense White, Intense Portable & Max Models



HARDWIRED - Wall mounted controller & remote control.



DIY - Timer switch remote control of plug-in heaters. Max 10amps.

HEATSTRIP[®] 

+61 (0) 3 9562 3455
sales@heatstrip.com.au